

STATE OF FLORIDA
COUNTY OF PALM BEACH
THIS PLAT WAS FIELD FOR
RECORD AT _____ P.M.
THIS _____ DAY OF _____
A.D. 2019 AND DULY RECORDED
IN PLAT BOOK _____ ON
PAGES _____ AND _____

SHARON R BOCK
CLERK AND COMPTROLLER

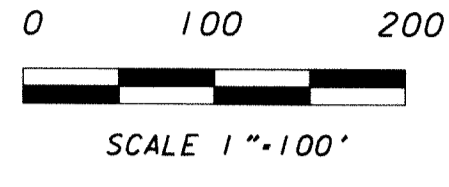
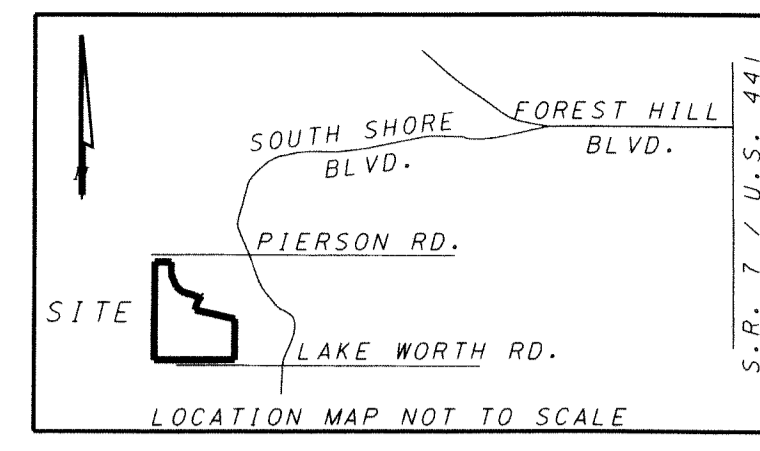
BY: _____
DEPUTY CLERK

PBIEC ESTATES OF WELLINGTON COUNTRYPLACE, P.U.D.

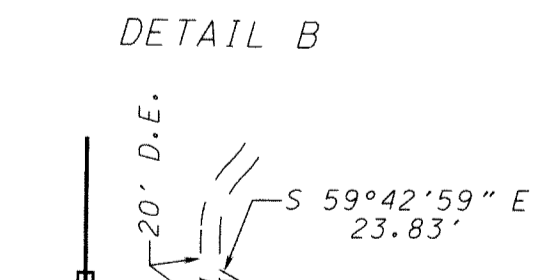
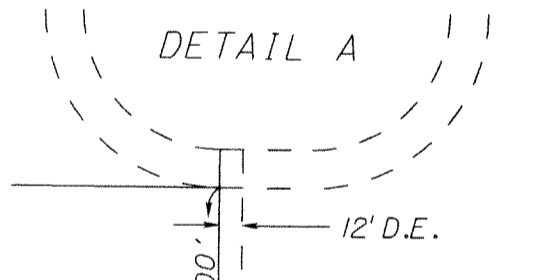
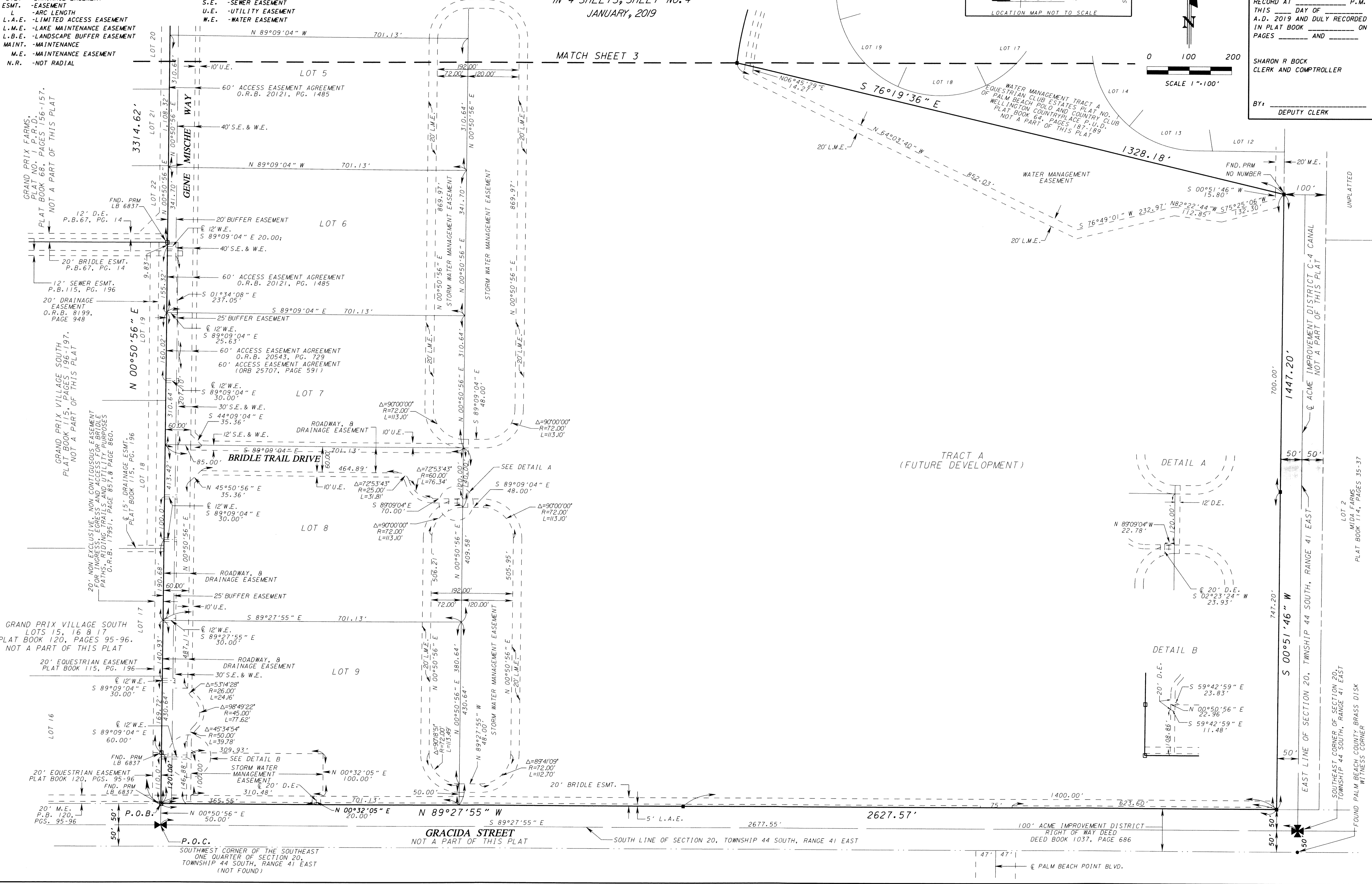
IN PART OF SECTION 20, TOWNSHIP 44 SOUTH, RANGE 41 EAST
VILLAGE OF WELLINGTON, PALM BEACH COUNTY, FLORIDA
IN 4 SHEETS, SHEET NO. 4
JANUARY, 2019

LEGEND:

- PERMANENT REFERENCE MONUMENT, LB-6837
- PERMANENT CONTROL POINT
- Δ DELTA ANGLE
- B.E. BRIDGE EASEMENT
- ⊕ CENTERLINE
- C.H. CHORD
- C.B. CHORD BEARING
- D.B. DEED BOOK
- D.E. DRAINAGE EASEMENT
- ESMT. EASEMENT
- L ARC LENGTH
- L.A.E. LIMITED ACCESS EASEMENT
- L.M.E. LAKE MAINTENANCE EASEMENT
- L.B.E. LANDSCAPE BUFFER EASEMENT
- MAINT. MAINTENANCE
- M.E. MAINTENANCE EASEMENT
- N.R. NOT RADIAL
- R RADIUS
- N.T.S. NOT TO SCALE
- O.R.B. OFFICIAL RECORD BOOK
- P.O.B. POINT OF BEGINNING
- P.O.C. POINT OF COMMENCEMENT
- P.B. PLAT BOOK
- P.S. PAGES
- P.S.M. PROFESSIONAL SURVEYOR AND MAPPER
- R/W RIGHT OF WAY
- S.E. SEWER EASEMENT
- U.E. UTILITY EASEMENT
- W.E. WATER EASEMENT



UNPLATTED



LOT 2
MIDA FARMS
PLAT BOOK 114, PAGES 35-37

SOUTHEAST CORNER OF SECTION 20,
TOWNSHIP 44 SOUTH, RANGE 41 EAST
FOUND PALM BEACH COUNTY BRASS DISK
IN TRESS CORNER